

Return of Organization Exempt From Income Tax
Under section 501(c), 527, or 4947(a)(1) of the Internal Revenue Code (except private foundations)

Department of the Treasury
Internal Revenue Service

▶ Do not enter social security numbers on this form as it may be made public.
▶ Go to www.irs.gov/Form990 for instructions and the latest information.

Open to Public Inspection

A For the 2021 calendar year, or tax year beginning and ending

B Check if applicable: <input type="checkbox"/> Address change <input type="checkbox"/> Name change <input type="checkbox"/> Initial return <input type="checkbox"/> Final return/terminated <input type="checkbox"/> Amended return <input type="checkbox"/> Application pending	C Name of organization WESCOE FOUNDATION FOR PULMONARY FIBROSIS		D Employer identification number 27-4464618
	Doing business as		E Telephone number 484-553-6340
	Number and street (or P.O. box if mail is not delivered to street address)	Room/suite	
	229 N. MAIN STREET		G Gross receipts \$ 186,253.
	City or town, state or province, country, and ZIP or foreign postal code COOPERSBURG, PA 18036		
F Name and address of principal officer: JENNIFER WESCOE SINGLEY SAME AS C ABOVE		H(a) Is this a group return for subordinates? <input type="checkbox"/> Yes <input checked="" type="checkbox"/> No H(b) Are all subordinates included? <input type="checkbox"/> Yes <input type="checkbox"/> No If "No," attach a list. See instructions H(c) Group exemption number ▶	

I Tax-exempt status: 501(c)(3) 501(c) () (insert no.) 4947(a)(1) or 527

J Website: ▶ **WWW.WESCOE.ORG**

K Form of organization: Corporation Trust Association Other ▶ **L** Year of formation: **2009** **M** State of legal domicile: **PA**

Part I Summary

Activities & Governance	1 Briefly describe the organization's mission or most significant activities: THE WESCOE FOUNDATION FOR PULMONARY FIBROSIS PROVIDES SUPPORT, EDUCATION, ADVOCACY AND		
	2 Check this box <input type="checkbox"/> if the organization discontinued its operations or disposed of more than 25% of its net assets.		
	3 Number of voting members of the governing body (Part VI, line 1a)	3	6
	4 Number of independent voting members of the governing body (Part VI, line 1b)	4	6
	5 Total number of individuals employed in calendar year 2021 (Part V, line 2a)	5	6
	6 Total number of volunteers (estimate if necessary)	6	20
	7a Total unrelated business revenue from Part VIII, column (C), line 12	7a	0.
b Net unrelated business taxable income from Form 990-T, Part I, line 11	7b	0.	
Revenue	8 Contributions and grants (Part VIII, line 1h)	Prior Year 202,093.	Current Year 177,720.
	9 Program service revenue (Part VIII, line 2g)	0.	0.
	10 Investment income (Part VIII, column (A), lines 3, 4, and 7d)	22.	33.
	11 Other revenue (Part VIII, column (A), lines 5, 6d, 8c, 9c, 10c, and 11e)	-2,546.	-9,102.
	12 Total revenue - add lines 8 through 11 (must equal Part VIII, column (A), line 12)	199,569.	168,651.
Expenses	13 Grants and similar amounts paid (Part IX, column (A), lines 1-3)	0.	0.
	14 Benefits paid to or for members (Part IX, column (A), line 4)	0.	0.
	15 Salaries, other compensation, employee benefits (Part IX, column (A), lines 5-10)	41,901.	64,720.
	16a Professional fundraising fees (Part IX, column (A), line 11e)	0.	0.
	b Total fundraising expenses (Part IX, column (D), line 25) ▶ 21,295.		
	17 Other expenses (Part IX, column (A), lines 11a-11d, 11f-24e)	45,230.	101,688.
	18 Total expenses. Add lines 13-17 (must equal Part IX, column (A), line 25)	87,131.	166,408.
19 Revenue less expenses. Subtract line 18 from line 12	112,438.	2,243.	
Net Assets or Fund Balances	20 Total assets (Part X, line 16)	Beginning of Current Year 136,873.	End of Year 139,116.
	21 Total liabilities (Part X, line 26)	0.	0.
	22 Net assets or fund balances. Subtract line 21 from line 20	136,873.	139,116.

Part II Signature Block

Under penalties of perjury, I declare that I have examined this return, including accompanying schedules and statements, and to the best of my knowledge and belief, it is true, correct, and complete. Declaration of preparer (other than officer) is based on all information of which preparer has any knowledge.

Sign Here	▶ Signature of officer		Date
	▶ JENNIFER WESCOE SINGLEY, EXECUTIVE DIRECTOR Type or print name and title		
Paid Preparer Use Only	Print/Type preparer's name	Preparer's signature	Date
	Firm's name ▶	Firm's EIN ▶	Check if self-employed <input type="checkbox"/> PTIN
	Firm's address ▶	Phone no.	

May the IRS discuss this return with the preparer shown above? See instructions Yes No

Part III Statement of Program Service Accomplishments

Check if Schedule O contains a response or note to any line in this Part III [X]

1 Briefly describe the organization's mission: THE WESCOE FOUNDATION FOR PULMONARY FIBROSIS PROVIDES SUPPORT, EDUCATION, ADVOCACY AND RESOURCES FOR PATIENTS LIVING WITH IDIOPATHIC PULMONARY FIBROSIS (IPF), THEIR FAMILIES AND CARE PARTNERS IN ORDER TO SUSTAIN THE HIGHEST POSSIBLE QUALITY OF LIFE.

2 Did the organization undertake any significant program services during the year which were not listed on the prior Form 990 or 990-EZ? [] Yes [X] No If "Yes," describe these new services on Schedule O.

3 Did the organization cease conducting, or make significant changes in how it conducts, any program services? [] Yes [X] No If "Yes," describe these changes on Schedule O.

4 Describe the organization's program service accomplishments for each of its three largest program services, as measured by expenses. Section 501(c)(3) and 501(c)(4) organizations are required to report the amount of grants and allocations to others, the total expenses, and revenue, if any, for each program service reported.

4a (Code:) (Expenses \$ 13,824. including grants of \$) (Revenue \$) SUPPORT GROUPS: THROUGH OUR SUPPORT GROUPS, THE WESCOE FOUNDATION FOR PULMONARY FIBROSIS CONNECTS PATIENTS, CARE PARTNERS AND FAMILIES TO ESSENTIAL EDUCATION, SUPPORT AND RESOURCES WHILE NAVIGATING PULMONARY FIBROSIS. WE HAVE EVOLVED FROM ONE SUPPORT GROUP IN THE LEHIGH VALLEY, PENNSYLVANIA AREA TO 17 SUPPORT GROUPS IN PENNSYLVANIA AND NEW JERSEY. AS A RESULT OF COVID-19, WE HAVE TRANSITIONED OUR SUPPORT GROUPS TO A VIRTUAL PLATFORM AND MAINTAINED CONSISTENCY WITH ATTENDANCE AS WE PRIORITIZE THE NEEDS OF PATIENTS AND FAMILIES. IN EFFORT TO GROW AND DEVELOP OUR PROGRAMMING, OUR COLLABORATIVE EFFORTS WITH MAJOR MEDICAL CENTERS AND AREA COMMUNITY HOSPITALS REMAIN STRONG IN PATIENT AND COMMUNITY ENGAGEMENT. WE HAVE EXPANDED OUR GROUPS TO PRIORITIZE CARE PARTNER SUPPORT, LUNG TRANSPLANT EDUCATION, AND OVERALL MENTAL HEALTH.

4b (Code:) (Expenses \$ 1,073. including grants of \$) (Revenue \$) IPF EDUCATIONAL SEMINARS: THE WESCOE FOUNDATION FOR PULMONARY FIBROSIS HAS PRIORITIZED OUR IPF EDUCATIONAL SEMINARS TO MAKE SURE PATIENTS, DIAGNOSED AND NEWLY DIAGNOSED, RECEIVE THE ESSENTIAL INFORMATION WHILE LIVING WITH PULMONARY FIBROSIS. WE HAVE WORKED WITH LEADING HCPS, INDUSTRY, AND MENTAL HEALTH PROVIDERS TO DELIVER THESE VERY IMPORTANT SESSIONS. THE TRANSITION TO A VIRTUAL PLATFORM HAS ALLOWED US TO EXPAND OUR OUTREACH BOTH NATIONALLY AND INTERNATIONALLY.

4c (Code:) (Expenses \$ 86,457. including grants of \$) (Revenue \$) PA-IPF SUPPORT NETWORK: THE PA-IPF SUPPORT NETWORK IS A GRANT FUNDED PROGRAM UNDER WESCOE FOUNDATION FOR PULMONARY FIBROSIS. THIS PROGRAM IS A NEW, ONE-OF-ITS KIND, ONLY STATE-WIDE IPF SUPPORT NETWORK THAT EXISTS IN THE UNITED STATES. WE HAVE INCORPORATED CENTERS OF EXCELLENCE TO CONTINUE EFFECTIVE EDUCATION AND SUPPORT THROUGHOUT PENNSYLVANIA. LED BY LEADING EXPERTS, WE HOLD A MONTHLY PULMONARY FIBROSIS PODCAST ON ALL TOPICS DEALING WITH PULMONARY FIBROSIS. THE SUPPORT NETWORK ALSO PROVIDES PATIENT AND PROVIDER CHECKLISTS, PATIENT GUIDE AND OTHER VALUABLE, PRACTICAL TOOLS FOR PATIENTS AND FAMILIES. WE HAVE LED A VERY SUCCESSFUL PULMONARY FIBROSIS AWARENESS CAMPAIGN THROUGH IPF COMMUNITY AWARENESS EVENTS, PASSING OF PA SENATE RESOLUTION DESIGNATING A WEEK IN SEPTEMBER AS RESEARCH AND AWARENESS WEEK, AND LIGHTING 9 PROMINENT

4d Other program services (Describe on Schedule O.) (Expenses \$ including grants of \$) (Revenue \$)

4e Total program service expenses 101,354.

Part IV Checklist of Required Schedules

	Yes	No
1 Is the organization described in section 501(c)(3) or 4947(a)(1) (other than a private foundation)? <i>If "Yes," complete Schedule A</i>	X	
2 Is the organization required to complete <i>Schedule B, Schedule of Contributors</i> ? See instructions	X	
3 Did the organization engage in direct or indirect political campaign activities on behalf of or in opposition to candidates for public office? <i>If "Yes," complete Schedule C, Part I</i>		X
4 Section 501(c)(3) organizations. Did the organization engage in lobbying activities, or have a section 501(h) election in effect during the tax year? <i>If "Yes," complete Schedule C, Part II</i>		X
5 Is the organization a section 501(c)(4), 501(c)(5), or 501(c)(6) organization that receives membership dues, assessments, or similar amounts as defined in Rev. Proc. 98-19? <i>If "Yes," complete Schedule C, Part III</i>		X
6 Did the organization maintain any donor advised funds or any similar funds or accounts for which donors have the right to provide advice on the distribution or investment of amounts in such funds or accounts? <i>If "Yes," complete Schedule D, Part I</i>		X
7 Did the organization receive or hold a conservation easement, including easements to preserve open space, the environment, historic land areas, or historic structures? <i>If "Yes," complete Schedule D, Part II</i>		X
8 Did the organization maintain collections of works of art, historical treasures, or other similar assets? <i>If "Yes," complete Schedule D, Part III</i>		X
9 Did the organization report an amount in Part X, line 21, for escrow or custodial account liability, serve as a custodian for amounts not listed in Part X; or provide credit counseling, debt management, credit repair, or debt negotiation services? <i>If "Yes," complete Schedule D, Part IV</i>		X
10 Did the organization, directly or through a related organization, hold assets in donor-restricted endowments or in quasi endowments? <i>If "Yes," complete Schedule D, Part V</i>		X
11 If the organization's answer to any of the following questions is "Yes," then complete Schedule D, Parts VI, VII, VIII, IX, or X, as applicable.		
a Did the organization report an amount for land, buildings, and equipment in Part X, line 10? <i>If "Yes," complete Schedule D, Part VI</i>	X	
b Did the organization report an amount for investments - other securities in Part X, line 12, that is 5% or more of its total assets reported in Part X, line 16? <i>If "Yes," complete Schedule D, Part VII</i>		X
c Did the organization report an amount for investments - program related in Part X, line 13, that is 5% or more of its total assets reported in Part X, line 16? <i>If "Yes," complete Schedule D, Part VIII</i>		X
d Did the organization report an amount for other assets in Part X, line 15, that is 5% or more of its total assets reported in Part X, line 16? <i>If "Yes," complete Schedule D, Part IX</i>		X
e Did the organization report an amount for other liabilities in Part X, line 25? <i>If "Yes," complete Schedule D, Part X</i>		X
f Did the organization's separate or consolidated financial statements for the tax year include a footnote that addresses the organization's liability for uncertain tax positions under FIN 48 (ASC 740)? <i>If "Yes," complete Schedule D, Part X</i>		X
12a Did the organization obtain separate, independent audited financial statements for the tax year? <i>If "Yes," complete Schedule D, Parts XI and XII</i>		X
b Was the organization included in consolidated, independent audited financial statements for the tax year? <i>If "Yes," and if the organization answered "No" to line 12a, then completing Schedule D, Parts XI and XII is optional</i>		X
13 Is the organization a school described in section 170(b)(1)(A)(ii)? <i>If "Yes," complete Schedule E</i>		X
14a Did the organization maintain an office, employees, or agents outside of the United States?		X
b Did the organization have aggregate revenues or expenses of more than \$10,000 from grantmaking, fundraising, business, investment, and program service activities outside the United States, or aggregate foreign investments valued at \$100,000 or more? <i>If "Yes," complete Schedule F, Parts I and IV</i>		X
15 Did the organization report on Part IX, column (A), line 3, more than \$5,000 of grants or other assistance to or for any foreign organization? <i>If "Yes," complete Schedule F, Parts II and IV</i>		X
16 Did the organization report on Part IX, column (A), line 3, more than \$5,000 of aggregate grants or other assistance to or for foreign individuals? <i>If "Yes," complete Schedule F, Parts III and IV</i>		X
17 Did the organization report a total of more than \$15,000 of expenses for professional fundraising services on Part IX, column (A), lines 6 and 11e? <i>If "Yes," complete Schedule G, Part I.</i> See instructions		X
18 Did the organization report more than \$15,000 total of fundraising event gross income and contributions on Part VIII, lines 1c and 8a? <i>If "Yes," complete Schedule G, Part II</i>	X	
19 Did the organization report more than \$15,000 of gross income from gaming activities on Part VIII, line 9a? <i>If "Yes," complete Schedule G, Part III</i>		X
20a Did the organization operate one or more hospital facilities? <i>If "Yes," complete Schedule H</i>		X
b If "Yes" to line 20a, did the organization attach a copy of its audited financial statements to this return?		
21 Did the organization report more than \$5,000 of grants or other assistance to any domestic organization or domestic government on Part IX, column (A), line 1? <i>If "Yes," complete Schedule I, Parts I and II</i>		X

Part IV Checklist of Required Schedules (continued)

	Yes	No
22 Did the organization report more than \$5,000 of grants or other assistance to or for domestic individuals on Part IX, column (A), line 2? <i>If "Yes," complete Schedule I, Parts I and III</i>		X
23 Did the organization answer "Yes" to Part VII, Section A, line 3, 4, or 5, about compensation of the organization's current and former officers, directors, trustees, key employees, and highest compensated employees? <i>If "Yes," complete Schedule J</i>		X
24a Did the organization have a tax-exempt bond issue with an outstanding principal amount of more than \$100,000 as of the last day of the year, that was issued after December 31, 2002? <i>If "Yes," answer lines 24b through 24d and complete Schedule K. If "No," go to line 25a</i>		X
b Did the organization invest any proceeds of tax-exempt bonds beyond a temporary period exception?		
c Did the organization maintain an escrow account other than a refunding escrow at any time during the year to defease any tax-exempt bonds?		
d Did the organization act as an "on behalf of" issuer for bonds outstanding at any time during the year?		
25a Section 501(c)(3), 501(c)(4), and 501(c)(29) organizations. Did the organization engage in an excess benefit transaction with a disqualified person during the year? <i>If "Yes," complete Schedule L, Part I</i>		X
b Is the organization aware that it engaged in an excess benefit transaction with a disqualified person in a prior year, and that the transaction has not been reported on any of the organization's prior Forms 990 or 990-EZ? <i>If "Yes," complete Schedule L, Part I</i>		X
26 Did the organization report any amount on Part X, line 5 or 22, for receivables from or payables to any current or former officer, director, trustee, key employee, creator or founder, substantial contributor, or 35% controlled entity or family member of any of these persons? <i>If "Yes," complete Schedule L, Part II</i>		X
27 Did the organization provide a grant or other assistance to any current or former officer, director, trustee, key employee, creator or founder, substantial contributor or employee thereof, a grant selection committee member, or to a 35% controlled entity (including an employee thereof) or family member of any of these persons? <i>If "Yes," complete Schedule L, Part III</i>		X
28 Was the organization a party to a business transaction with one of the following parties (see the Schedule L, Part IV, instructions for applicable filing thresholds, conditions, and exceptions):		
a A current or former officer, director, trustee, key employee, creator or founder, or substantial contributor? <i>If "Yes," complete Schedule L, Part IV</i>		X
b A family member of any individual described in line 28a? <i>If "Yes," complete Schedule L, Part IV</i>		X
c A 35% controlled entity of one or more individuals and/or organizations described in line 28a or 28b? <i>If "Yes," complete Schedule L, Part IV</i>		X
29 Did the organization receive more than \$25,000 in non-cash contributions? <i>If "Yes," complete Schedule M</i>		X
30 Did the organization receive contributions of art, historical treasures, or other similar assets, or qualified conservation contributions? <i>If "Yes," complete Schedule M</i>		X
31 Did the organization liquidate, terminate, or dissolve and cease operations? <i>If "Yes," complete Schedule N, Part I</i>		X
32 Did the organization sell, exchange, dispose of, or transfer more than 25% of its net assets? <i>If "Yes," complete Schedule N, Part II</i>		X
33 Did the organization own 100% of an entity disregarded as separate from the organization under Regulations sections 301.7701-2 and 301.7701-3? <i>If "Yes," complete Schedule R, Part I</i>		X
34 Was the organization related to any tax-exempt or taxable entity? <i>If "Yes," complete Schedule R, Part II, III, or IV, and Part V, line 1</i>		X
35a Did the organization have a controlled entity within the meaning of section 512(b)(13)?		X
b If "Yes" to line 35a, did the organization receive any payment from or engage in any transaction with a controlled entity within the meaning of section 512(b)(13)? <i>If "Yes," complete Schedule R, Part V, line 2</i>		
36 Section 501(c)(3) organizations. Did the organization make any transfers to an exempt non-charitable related organization? <i>If "Yes," complete Schedule R, Part V, line 2</i>		X
37 Did the organization conduct more than 5% of its activities through an entity that is not a related organization and that is treated as a partnership for federal income tax purposes? <i>If "Yes," complete Schedule R, Part VI</i>		X
38 Did the organization complete Schedule O and provide explanations on Schedule O for Part VI, lines 11b and 19?	X	

Note: All Form 990 filers are required to complete Schedule O

Part V Statements Regarding Other IRS Filings and Tax Compliance

Check if Schedule O contains a response or note to any line in this Part V

	Yes	No
1a Enter the number reported in box 3 of Form 1096. Enter -0- if not applicable		
b Enter the number of Forms W-2G included on line 1a. Enter -0- if not applicable		
c Did the organization comply with backup withholding rules for reportable payments to vendors and reportable gaming (gambling) winnings to prize winners?		

Part V Statements Regarding Other IRS Filings and Tax Compliance (continued)

Table with columns for question number, question text, and Yes/No columns. Rows include questions 2a through 17 regarding employee reporting, tax returns, unrelated business income, foreign accounts, prohibited transactions, and charitable contributions.

Part VI Governance, Management, and Disclosure. For each "Yes" response to lines 2 through 7b below, and for a "No" response to line 8a, 8b, or 10b below, describe the circumstances, processes, or changes on Schedule O. See instructions.

Check if Schedule O contains a response or note to any line in this Part VI

Section A. Governing Body and Management

		Yes	No
1a	Enter the number of voting members of the governing body at the end of the tax year If there are material differences in voting rights among members of the governing body, or if the governing body delegated broad authority to an executive committee or similar committee, explain on Schedule O.		
1b	Enter the number of voting members included on line 1a, above, who are independent		
2	Did any officer, director, trustee, or key employee have a family relationship or a business relationship with any other officer, director, trustee, or key employee?		X
3	Did the organization delegate control over management duties customarily performed by or under the direct supervision of officers, directors, trustees, or key employees to a management company or other person?		X
4	Did the organization make any significant changes to its governing documents since the prior Form 990 was filed?		X
5	Did the organization become aware during the year of a significant diversion of the organization's assets?		X
6	Did the organization have members or stockholders?		X
7a	Did the organization have members, stockholders, or other persons who had the power to elect or appoint one or more members of the governing body?		X
7b	Are any governance decisions of the organization reserved to (or subject to approval by) members, stockholders, or persons other than the governing body?		X
8	Did the organization contemporaneously document the meetings held or written actions undertaken during the year by the following:		
8a	The governing body?	X	
8b	Each committee with authority to act on behalf of the governing body?	X	
9	Is there any officer, director, trustee, or key employee listed in Part VII, Section A, who cannot be reached at the organization's mailing address? If "Yes," provide the names and addresses on Schedule O		X

Section B. Policies (This Section B requests information about policies not required by the Internal Revenue Code.)

		Yes	No
10a	Did the organization have local chapters, branches, or affiliates?		X
10b	If "Yes," did the organization have written policies and procedures governing the activities of such chapters, affiliates, and branches to ensure their operations are consistent with the organization's exempt purposes?		
11a	Has the organization provided a complete copy of this Form 990 to all members of its governing body before filing the form?	X	
11b	Describe on Schedule O the process, if any, used by the organization to review this Form 990.		
12a	Did the organization have a written conflict of interest policy? If "No," go to line 13	X	
12b	Were officers, directors, or trustees, and key employees required to disclose annually interests that could give rise to conflicts?	X	
12c	Did the organization regularly and consistently monitor and enforce compliance with the policy? If "Yes," describe on Schedule O how this was done	X	
13	Did the organization have a written whistleblower policy?	X	
14	Did the organization have a written document retention and destruction policy?		X
15	Did the process for determining compensation of the following persons include a review and approval by independent persons, comparability data, and contemporaneous substantiation of the deliberation and decision?		
15a	The organization's CEO, Executive Director, or top management official	X	
15b	Other officers or key employees of the organization	X	
	If "Yes" to line 15a or 15b, describe the process on Schedule O. See instructions.		
16a	Did the organization invest in, contribute assets to, or participate in a joint venture or similar arrangement with a taxable entity during the year?		X
16b	If "Yes," did the organization follow a written policy or procedure requiring the organization to evaluate its participation in joint venture arrangements under applicable federal tax law, and take steps to safeguard the organization's exempt status with respect to such arrangements?		

Section C. Disclosure

- 17** List the states with which a copy of this Form 990 is required to be filed **PA**
- 18** Section 6104 requires an organization to make its Forms 1023 (1024 or 1024-A, if applicable), 990, and 990-T (section 501(c)(3)s only) available for public inspection. Indicate how you made these available. Check all that apply.
 Own website Another's website Upon request Other (explain on Schedule O)
- 19** Describe on Schedule O whether (and if so, how) the organization made its governing documents, conflict of interest policy, and financial statements available to the public during the tax year.
- 20** State the name, address, and telephone number of the person who possesses the organization's books and records **KYLE ELSENBAUMER - 610-751-4104**
229 N. MAIN ST., COOPERSBURG, PA 18036

Part VII Compensation of Officers, Directors, Trustees, Key Employees, Highest Compensated Employees, and Independent Contractors

Check if Schedule O contains a response or note to any line in this Part VII

Section A. Officers, Directors, Trustees, Key Employees, and Highest Compensated Employees

1a Complete this table for all persons required to be listed. Report compensation for the calendar year ending with or within the organization's tax year.

- List all of the organization's current officers, directors, trustees (whether individuals or organizations), regardless of amount of compensation.
List all of the organization's current key employees, if any. See the instructions for definition of "key employee."
List the organization's five current highest compensated employees (other than an officer, director, trustee, or key employee) who received reportable compensation (box 5 of Form W-2, Form 1099-MISC, and/or box 1 of Form 1099-NEC) of more than \$100,000 from the organization and any related organizations.
List all of the organization's former officers, key employees, and highest compensated employees who received more than \$100,000 of reportable compensation from the organization and any related organizations.
List all of the organization's former directors or trustees that received, in the capacity as a former director or trustee of the organization, more than \$10,000 of reportable compensation from the organization and any related organizations. See the instructions for the order in which to list the persons above.

Check this box if neither the organization nor any related organization compensated any current officer, director, or trustee.

Table with 6 main columns: (A) Name and title, (B) Average hours per week, (C) Position (Individual trustee or director, Institutional trustee, Officer, Key employee, Highest compensated employee, Former), (D) Reportable compensation from the organization, (E) Reportable compensation from related organizations, (F) Estimated amount of other compensation.

Part VII Section A. Officers, Directors, Trustees, Key Employees, and Highest Compensated Employees (continued)

(A) Name and title	(B) Average hours per week (list any hours for related organizations below line)	(C) Position (do not check more than one box, unless person is both an officer and a director/trustee)						(D) Reportable compensation from the organization (W-2/1099-MISC/1099-NEC)	(E) Reportable compensation from related organizations (W-2/1099-MISC/1099-NEC)	(F) Estimated amount of other compensation from the organization and related organizations
		Individual trustee or director	Institutional trustee	Officer	Key employee	Highest compensated employee	Former			
1b Subtotal							0.	0.	0.	
c Total from continuation sheets to Part VII, Section A							0.	0.	0.	
d Total (add lines 1b and 1c)							0.	0.	0.	

2 Total number of individuals (including but not limited to those listed above) who received more than \$100,000 of reportable compensation from the organization **0**

	Yes	No
3 Did the organization list any former officer, director, trustee, key employee, or highest compensated employee on line 1a? <i>If "Yes," complete Schedule J for such individual</i>		X
4 For any individual listed on line 1a, is the sum of reportable compensation and other compensation from the organization and related organizations greater than \$150,000? <i>If "Yes," complete Schedule J for such individual</i>		X
5 Did any person listed on line 1a receive or accrue compensation from any unrelated organization or individual for services rendered to the organization? <i>If "Yes," complete Schedule J for such person</i>		X

Section B. Independent Contractors

1 Complete this table for your five highest compensated independent contractors that received more than \$100,000 of compensation from the organization. Report compensation for the calendar year ending with or within the organization's tax year.

(A) Name and business address	(B) Description of services	(C) Compensation
NONE		

2 Total number of independent contractors (including but not limited to those listed above) who received more than \$100,000 of compensation from the organization **0**

Part VIII Statement of Revenue

Check if Schedule O contains a response or note to any line in this Part VIII

			(A)	(B)	(C)	(D)	
			Total revenue	Related or exempt function revenue	Unrelated business revenue	Revenue excluded from tax under sections 512 - 514	
Contributions, Gifts, Grants and Other Similar Amounts	1 a Federated campaigns	1a					
	b Membership dues	1b					
	c Fundraising events	1c	16,737.				
	d Related organizations	1d					
	e Government grants (contributions)	1e	108,106.				
	f All other contributions, gifts, grants, and similar amounts not included above ...	1f	52,877.				
	g Noncash contributions included in lines 1a-1f	1g	\$				
	h Total. Add lines 1a-1f			177,720.			
Program Service Revenue	2 a _____	Business Code					
	b _____						
	c _____						
	d _____						
	e _____						
	f All other program service revenue						
	g Total. Add lines 2a-2f						
Other Revenue	3 Investment income (including dividends, interest, and other similar amounts)		33.			33.	
	4 Income from investment of tax-exempt bond proceeds						
	5 Royalties						
	6 a Gross rents	6a	(i) Real				
			(ii) Personal				
	b Less: rental expenses ...	6b					
	c Rental income or (loss)	6c					
	d Net rental income or (loss)						
	7 a Gross amount from sales of assets other than inventory	7a	(i) Securities				
			(ii) Other				
	b Less: cost or other basis and sales expenses	7b					
	c Gain or (loss)	7c					
d Net gain or (loss)							
8 a Gross income from fundraising events (not including \$ 16,737. of contributions reported on line 1c). See Part IV, line 18	8a		8,500.				
b Less: direct expenses	8b		17,602.				
c Net income or (loss) from fundraising events			-9,102.				
9 a Gross income from gaming activities. See Part IV, line 19	9a						
b Less: direct expenses	9b						
c Net income or (loss) from gaming activities							
10 a Gross sales of inventory, less returns and allowances	10a						
b Less: cost of goods sold	10b						
c Net income or (loss) from sales of inventory							
Miscellaneous Revenue	11 a _____	Business Code					
	b _____						
	c _____						
	d All other revenue						
	e Total. Add lines 11a-11d						
12 Total revenue. See instructions			168,651.	0.	0.	-9,069.	

Part IX Statement of Functional Expenses

Section 501(c)(3) and 501(c)(4) organizations must complete all columns. All other organizations must complete column (A).

Check if Schedule O contains a response or note to any line in this Part IX

Do not include amounts reported on lines 6b, 7b, 8b, 9b, and 10b of Part VIII.	(A) Total expenses	(B) Program service expenses	(C) Management and general expenses	(D) Fundraising expenses
1 Grants and other assistance to domestic organizations and domestic governments. See Part IV, line 21				
2 Grants and other assistance to domestic individuals. See Part IV, line 22				
3 Grants and other assistance to foreign organizations, foreign governments, and foreign individuals. See Part IV, lines 15 and 16				
4 Benefits paid to or for members				
5 Compensation of current officers, directors, trustees, and key employees	45,000.	22,500.	13,500.	9,000.
6 Compensation not included above to disqualified persons (as defined under section 4958(f)(1)) and persons described in section 4958(c)(3)(B)				
7 Other salaries and wages	15,368.	7,684.	4,610.	3,074.
8 Pension plan accruals and contributions (include section 401(k) and 403(b) employer contributions)				
9 Other employee benefits				
10 Payroll taxes	4,352.	2,176.	1,306.	870.
11 Fees for services (nonemployees):				
a Management				
b Legal	9,270.		9,270.	
c Accounting	2,000.		2,000.	
d Lobbying				
e Professional fundraising services. See Part IV, line 17				
f Investment management fees				
g Other. (If line 11g amount exceeds 10% of line 25, column (A), amount, list line 11g expenses on Sch O.)	546.		546.	
12 Advertising and promotion	6,495.	3,248.	1,948.	1,299.
13 Office expenses	18,712.	9,357.	5,613.	3,742.
14 Information technology				
15 Royalties				
16 Occupancy	5,150.	2,575.	1,545.	1,030.
17 Travel				
18 Payments of travel or entertainment expenses for any federal, state, or local public officials				
19 Conferences, conventions, and meetings				
20 Interest				
21 Payments to affiliates				
22 Depreciation, depletion, and amortization	1,817.	909.	545.	363.
23 Insurance	1,692.	846.	508.	338.
24 Other expenses. Itemize expenses not covered above. (List miscellaneous expenses on line 24e. If line 24e amount exceeds 10% of line 25, column (A), amount, list line 24e expenses on Schedule O.)				
a PROGRAMMING	36,997.	36,997.		
b SUPPORT GROUPS	7,667.	7,667.		
c SUPPLIES	3,250.	1,625.	975.	650.
d MISCELLANEOUS	2,976.	1,488.	893.	595.
e All other expenses	5,116.	4,282.	500.	334.
25 Total functional expenses. Add lines 1 through 24e	166,408.	101,354.	43,759.	21,295.
26 Joint costs. Complete this line only if the organization reported in column (B) joint costs from a combined educational campaign and fundraising solicitation.				

Check here if following SOP 98-2 (ASC 958-720)

Part X Balance Sheet

Check if Schedule O contains a response or note to any line in this Part X

		(A) Beginning of year		(B) End of year	
Assets	1 Cash - non-interest-bearing	132,406.	1	134,404.	
	2 Savings and temporary cash investments		2		
	3 Pledges and grants receivable, net		3		
	4 Accounts receivable, net		4		
	5 Loans and other receivables from any current or former officer, director, trustee, key employee, creator or founder, substantial contributor, or 35% controlled entity or family member of any of these persons		5		
	6 Loans and other receivables from other disqualified persons (as defined under section 4958(f)(1)), and persons described in section 4958(c)(3)(B)		6		
	7 Notes and loans receivable, net		7		
	8 Inventories for sale or use		8		
	9 Prepaid expenses and deferred charges		9		
	10a Land, buildings, and equipment: cost or other basis. Complete Part VI of Schedule D	10a 6,528.			
	b Less: accumulated depreciation	10b 1,816.	4,467.	10c	4,712.
	11 Investments - publicly traded securities		11		
	12 Investments - other securities. See Part IV, line 11		12		
	13 Investments - program-related. See Part IV, line 11		13		
	14 Intangible assets		14		
	15 Other assets. See Part IV, line 11		15		
16 Total assets. Add lines 1 through 15 (must equal line 33)		136,873.	16	139,116.	
Liabilities	17 Accounts payable and accrued expenses		17		
	18 Grants payable		18		
	19 Deferred revenue		19		
	20 Tax-exempt bond liabilities		20		
	21 Escrow or custodial account liability. Complete Part IV of Schedule D		21		
	22 Loans and other payables to any current or former officer, director, trustee, key employee, creator or founder, substantial contributor, or 35% controlled entity or family member of any of these persons		22		
	23 Secured mortgages and notes payable to unrelated third parties		23		
	24 Unsecured notes and loans payable to unrelated third parties		24		
	25 Other liabilities (including federal income tax, payables to related third parties, and other liabilities not included on lines 17-24). Complete Part X of Schedule D		25		
	26 Total liabilities. Add lines 17 through 25		0.	26	0.
Net Assets or Fund Balances	Organizations that follow FASB ASC 958, check here <input checked="" type="checkbox"/> and complete lines 27, 28, 32, and 33.				
	27 Net assets without donor restrictions	136,873.	27	139,116.	
	28 Net assets with donor restrictions		28		
	Organizations that do not follow FASB ASC 958, check here <input type="checkbox"/> and complete lines 29 through 33.				
	29 Capital stock or trust principal, or current funds		29		
	30 Paid-in or capital surplus, or land, building, or equipment fund		30		
	31 Retained earnings, endowment, accumulated income, or other funds		31		
	32 Total net assets or fund balances	136,873.	32	139,116.	
33 Total liabilities and net assets/fund balances	136,873.	33	139,116.		

Part XI Reconciliation of Net Assets

Check if Schedule O contains a response or note to any line in this Part XI

1	Total revenue (must equal Part VIII, column (A), line 12)	1	168,651.
2	Total expenses (must equal Part IX, column (A), line 25)	2	166,408.
3	Revenue less expenses. Subtract line 2 from line 1	3	2,243.
4	Net assets or fund balances at beginning of year (must equal Part X, line 32, column (A))	4	136,873.
5	Net unrealized gains (losses) on investments	5	
6	Donated services and use of facilities	6	
7	Investment expenses	7	
8	Prior period adjustments	8	
9	Other changes in net assets or fund balances (explain on Schedule O)	9	0.
10	Net assets or fund balances at end of year. Combine lines 3 through 9 (must equal Part X, line 32, column (B))	10	139,116.

Part XII Financial Statements and Reporting

Check if Schedule O contains a response or note to any line in this Part XII

	Yes	No
1 Accounting method used to prepare the Form 990: <input checked="" type="checkbox"/> Cash <input type="checkbox"/> Accrual <input type="checkbox"/> Other _____ If the organization changed its method of accounting from a prior year or checked "Other," explain on Schedule O.		
2a Were the organization's financial statements compiled or reviewed by an independent accountant? _____ If "Yes," check a box below to indicate whether the financial statements for the year were compiled or reviewed on a separate basis, consolidated basis, or both: <input type="checkbox"/> Separate basis <input type="checkbox"/> Consolidated basis <input type="checkbox"/> Both consolidated and separate basis		X
b Were the organization's financial statements audited by an independent accountant? _____ If "Yes," check a box below to indicate whether the financial statements for the year were audited on a separate basis, consolidated basis, or both: <input type="checkbox"/> Separate basis <input type="checkbox"/> Consolidated basis <input type="checkbox"/> Both consolidated and separate basis		X
c If "Yes" to line 2a or 2b, does the organization have a committee that assumes responsibility for oversight of the audit, review, or compilation of its financial statements and selection of an independent accountant? _____ If the organization changed either its oversight process or selection process during the tax year, explain on Schedule O.		
3a As a result of a federal award, was the organization required to undergo an audit or audits as set forth in the Single Audit Act and OMB Circular A-133? _____		X
b If "Yes," did the organization undergo the required audit or audits? If the organization did not undergo the required audit or audits, explain why on Schedule O and describe any steps taken to undergo such audits _____		

Form 990 (2021)

Part II Support Schedule for Organizations Described in Sections 170(b)(1)(A)(iv) and 170(b)(1)(A)(vi)

(Complete only if you checked the box on line 5, 7, or 8 of Part I or if the organization failed to qualify under Part III. If the organization fails to qualify under the tests listed below, please complete Part III.)

Section A. Public Support

Calendar year (or fiscal year beginning in) ►	(a) 2017	(b) 2018	(c) 2019	(d) 2020	(e) 2021	(f) Total
1 Gifts, grants, contributions, and membership fees received. (Do not include any "unusual grants.")						
2 Tax revenues levied for the organization's benefit and either paid to or expended on its behalf						
3 The value of services or facilities furnished by a governmental unit to the organization without charge ...						
4 Total. Add lines 1 through 3						
5 The portion of total contributions by each person (other than a governmental unit or publicly supported organization) included on line 1 that exceeds 2% of the amount shown on line 11, column (f)						
6 Public support. Subtract line 5 from line 4.						

Section B. Total Support

Calendar year (or fiscal year beginning in) ►	(a) 2017	(b) 2018	(c) 2019	(d) 2020	(e) 2021	(f) Total
7 Amounts from line 4						
8 Gross income from interest, dividends, payments received on securities loans, rents, royalties, and income from similar sources ...						
9 Net income from unrelated business activities, whether or not the business is regularly carried on ...						
10 Other income. Do not include gain or loss from the sale of capital assets (Explain in Part VI.)						
11 Total support. Add lines 7 through 10						
12 Gross receipts from related activities, etc. (see instructions)					12	
13 First 5 years. If the Form 990 is for the organization's first, second, third, fourth, or fifth tax year as a section 501(c)(3) organization, check this box and stop here						<input type="checkbox"/>

Section C. Computation of Public Support Percentage

14 Public support percentage for 2021 (line 6, column (f), divided by line 11, column (f)).....	14	%
15 Public support percentage from 2020 Schedule A, Part II, line 14	15	%
16a 33 1/3% support test - 2021. If the organization did not check the box on line 13, and line 14 is 33 1/3% or more, check this box and stop here. The organization qualifies as a publicly supported organization		<input type="checkbox"/>
b 33 1/3% support test - 2020. If the organization did not check a box on line 13 or 16a, and line 15 is 33 1/3% or more, check this box and stop here. The organization qualifies as a publicly supported organization		<input type="checkbox"/>
17a 10% -facts-and-circumstances test - 2021. If the organization did not check a box on line 13, 16a, or 16b, and line 14 is 10% or more, and if the organization meets the facts-and-circumstances test, check this box and stop here. Explain in Part VI how the organization meets the facts-and-circumstances test. The organization qualifies as a publicly supported organization		<input type="checkbox"/>
b 10% -facts-and-circumstances test - 2020. If the organization did not check a box on line 13, 16a, 16b, or 17a, and line 15 is 10% or more, and if the organization meets the facts-and-circumstances test, check this box and stop here. Explain in Part VI how the organization meets the facts-and-circumstances test. The organization qualifies as a publicly supported organization		<input type="checkbox"/>
18 Private foundation. If the organization did not check a box on line 13, 16a, 16b, 17a, or 17b, check this box and see instructions		<input type="checkbox"/>

Part III Support Schedule for Organizations Described in Section 509(a)(2)

(Complete only if you checked the box on line 10 of Part I or if the organization failed to qualify under Part II. If the organization fails to qualify under the tests listed below, please complete Part II.)

Section A. Public Support

Calendar year (or fiscal year beginning in) ►	(a) 2017	(b) 2018	(c) 2019	(d) 2020	(e) 2021	(f) Total
1 Gifts, grants, contributions, and membership fees received. (Do not include any "unusual grants.")	62,658.	42,906.	99,373.	202,093.	177,456.	584,486.
2 Gross receipts from admissions, merchandise sold or services performed, or facilities furnished in any activity that is related to the organization's tax-exempt purpose	11,576.	11,250.	9,901.	4,240.	8,500.	45,467.
3 Gross receipts from activities that are not an unrelated trade or business under section 513						
4 Tax revenues levied for the organization's benefit and either paid to or expended on its behalf						
5 The value of services or facilities furnished by a governmental unit to the organization without charge						
6 Total. Add lines 1 through 5	74,234.	54,156.	109,274.	206,333.	185,956.	629,953.
7a Amounts included on lines 1, 2, and 3 received from disqualified persons						0.
b Amounts included on lines 2 and 3 received from other than disqualified persons that exceed the greater of \$5,000 or 1% of the amount on line 13 for the year						0.
c Add lines 7a and 7b						0.
8 Public support. (Subtract line 7c from line 6.)						629,953.

Section B. Total Support

Calendar year (or fiscal year beginning in) ►	(a) 2017	(b) 2018	(c) 2019	(d) 2020	(e) 2021	(f) Total
9 Amounts from line 6	74,234.	54,156.	109,274.	206,333.	185,956.	629,953.
10a Gross income from interest, dividends, payments received on securities loans, rents, royalties, and income from similar sources	6.	4.	6.	22.	33.	71.
b Unrelated business taxable income (less section 511 taxes) from businesses acquired after June 30, 1975						
c Add lines 10a and 10b	6.	4.	6.	22.	33.	71.
11 Net income from unrelated business activities not included on line 10b, whether or not the business is regularly carried on						
12 Other income. Do not include gain or loss from the sale of capital assets (Explain in Part VI.)	200.	236.	35.		264.	735.
13 Total support. (Add lines 9, 10c, 11, and 12.)	74,440.	54,396.	109,315.	206,355.	186,253.	630,759.

14 First 5 years. If the Form 990 is for the organization's first, second, third, fourth, or fifth tax year as a section 501(c)(3) organization, check this box and **stop here**

Section C. Computation of Public Support Percentage

15 Public support percentage for 2021 (line 8, column (f), divided by line 13, column (f))	15	99.87 %
16 Public support percentage from 2020 Schedule A, Part III, line 15	16	99.79 %

Section D. Computation of Investment Income Percentage

17 Investment income percentage for 2021 (line 10c, column (f), divided by line 13, column (f))	17	.01 %
18 Investment income percentage from 2020 Schedule A, Part III, line 17	18	.01 %

19a 33 1/3% support tests - 2021. If the organization did not check the box on line 14, and line 15 is more than 33 1/3%, and line 17 is not more than 33 1/3%, check this box and **stop here**. The organization qualifies as a publicly supported organization

b 33 1/3% support tests - 2020. If the organization did not check a box on line 14 or line 19a, and line 16 is more than 33 1/3%, and line 18 is not more than 33 1/3%, check this box and **stop here**. The organization qualifies as a publicly supported organization

20 Private foundation. If the organization did not check a box on line 14, 19a, or 19b, check this box and see instructions

Part IV Supporting Organizations

(Complete only if you checked a box in line 12 on Part I. If you checked box 12a, Part I, complete Sections A and B. If you checked box 12b, Part I, complete Sections A and C. If you checked box 12c, Part I, complete Sections A, D, and E. If you checked box 12d, Part I, complete Sections A and D, and complete Part V.)

Section A. All Supporting Organizations

	Yes	No
1 Are all of the organization's supported organizations listed by name in the organization's governing documents? <i>If "No," describe in Part VI how the supported organizations are designated. If designated by class or purpose, describe the designation. If historic and continuing relationship, explain.</i>		
2 Did the organization have any supported organization that does not have an IRS determination of status under section 509(a)(1) or (2)? <i>If "Yes," explain in Part VI how the organization determined that the supported organization was described in section 509(a)(1) or (2).</i>		
3a Did the organization have a supported organization described in section 501(c)(4), (5), or (6)? <i>If "Yes," answer lines 3b and 3c below.</i>		
b Did the organization confirm that each supported organization qualified under section 501(c)(4), (5), or (6) and satisfied the public support tests under section 509(a)(2)? <i>If "Yes," describe in Part VI when and how the organization made the determination.</i>		
c Did the organization ensure that all support to such organizations was used exclusively for section 170(c)(2)(B) purposes? <i>If "Yes," explain in Part VI what controls the organization put in place to ensure such use.</i>		
4a Was any supported organization not organized in the United States ("foreign supported organization")? <i>If "Yes," and if you checked box 12a or 12b in Part I, answer lines 4b and 4c below.</i>		
b Did the organization have ultimate control and discretion in deciding whether to make grants to the foreign supported organization? <i>If "Yes," describe in Part VI how the organization had such control and discretion despite being controlled or supervised by or in connection with its supported organizations.</i>		
c Did the organization support any foreign supported organization that does not have an IRS determination under sections 501(c)(3) and 509(a)(1) or (2)? <i>If "Yes," explain in Part VI what controls the organization used to ensure that all support to the foreign supported organization was used exclusively for section 170(c)(2)(B) purposes.</i>		
5a Did the organization add, substitute, or remove any supported organizations during the tax year? <i>If "Yes," answer lines 5b and 5c below (if applicable). Also, provide detail in Part VI, including (i) the names and EIN numbers of the supported organizations added, substituted, or removed; (ii) the reasons for each such action; (iii) the authority under the organization's organizing document authorizing such action; and (iv) how the action was accomplished (such as by amendment to the organizing document).</i>		
b Type I or Type II only. Was any added or substituted supported organization part of a class already designated in the organization's organizing document?		
c Substitutions only. Was the substitution the result of an event beyond the organization's control?		
6 Did the organization provide support (whether in the form of grants or the provision of services or facilities) to anyone other than (i) its supported organizations, (ii) individuals that are part of the charitable class benefited by one or more of its supported organizations, or (iii) other supporting organizations that also support or benefit one or more of the filing organization's supported organizations? <i>If "Yes," provide detail in Part VI.</i>		
7 Did the organization provide a grant, loan, compensation, or other similar payment to a substantial contributor (as defined in section 4958(c)(3)(C)), a family member of a substantial contributor, or a 35% controlled entity with regard to a substantial contributor? <i>If "Yes," complete Part I of Schedule L (Form 990).</i>		
8 Did the organization make a loan to a disqualified person (as defined in section 4958) not described on line 7? <i>If "Yes," complete Part I of Schedule L (Form 990).</i>		
9a Was the organization controlled directly or indirectly at any time during the tax year by one or more disqualified persons, as defined in section 4946 (other than foundation managers and organizations described in section 509(a)(1) or (2))? <i>If "Yes," provide detail in Part VI.</i>		
b Did one or more disqualified persons (as defined on line 9a) hold a controlling interest in any entity in which the supporting organization had an interest? <i>If "Yes," provide detail in Part VI.</i>		
c Did a disqualified person (as defined on line 9a) have an ownership interest in, or derive any personal benefit from, assets in which the supporting organization also had an interest? <i>If "Yes," provide detail in Part VI.</i>		
10a Was the organization subject to the excess business holdings rules of section 4943 because of section 4943(f) (regarding certain Type II supporting organizations, and all Type III non-functionally integrated supporting organizations)? <i>If "Yes," answer line 10b below.</i>		
b Did the organization have any excess business holdings in the tax year? <i>(Use Schedule C, Form 4720, to determine whether the organization had excess business holdings.)</i>		

Part IV Supporting Organizations (continued)

	Yes	No
11 Has the organization accepted a gift or contribution from any of the following persons?		
a A person who directly or indirectly controls, either alone or together with persons described on lines 11b and 11c below, the governing body of a supported organization?		
b A family member of a person described on line 11a above?		
c A 35% controlled entity of a person described on line 11a or 11b above? If "Yes" to line 11a, 11b, or 11c, provide detail in Part VI .		
11a		
11b		
11c		

Section B. Type I Supporting Organizations

	Yes	No
1 Did the governing body, members of the governing body, officers acting in their official capacity, or membership of one or more supported organizations have the power to regularly appoint or elect at least a majority of the organization's officers, directors, or trustees at all times during the tax year? If "No," describe in Part VI how the supported organization(s) effectively operated, supervised, or controlled the organization's activities. If the organization had more than one supported organization, describe how the powers to appoint and/or remove officers, directors, or trustees were allocated among the supported organizations and what conditions or restrictions, if any, applied to such powers during the tax year.		
2 Did the organization operate for the benefit of any supported organization other than the supported organization(s) that operated, supervised, or controlled the supporting organization? If "Yes," explain in Part VI how providing such benefit carried out the purposes of the supported organization(s) that operated, supervised, or controlled the supporting organization.		
1		
2		

Section C. Type II Supporting Organizations

	Yes	No
1 Were a majority of the organization's directors or trustees during the tax year also a majority of the directors or trustees of each of the organization's supported organization(s)? If "No," describe in Part VI how control or management of the supporting organization was vested in the same persons that controlled or managed the supported organization(s).		
1		

Section D. All Type III Supporting Organizations

	Yes	No
1 Did the organization provide to each of its supported organizations, by the last day of the fifth month of the organization's tax year, (i) a written notice describing the type and amount of support provided during the prior tax year, (ii) a copy of the Form 990 that was most recently filed as of the date of notification, and (iii) copies of the organization's governing documents in effect on the date of notification, to the extent not previously provided?		
2 Were any of the organization's officers, directors, or trustees either (i) appointed or elected by the supported organization(s) or (ii) serving on the governing body of a supported organization? If "No," explain in Part VI how the organization maintained a close and continuous working relationship with the supported organization(s).		
3 By reason of the relationship described on line 2, above, did the organization's supported organizations have a significant voice in the organization's investment policies and in directing the use of the organization's income or assets at all times during the tax year? If "Yes," describe in Part VI the role the organization's supported organizations played in this regard.		
1		
2		
3		

Section E. Type III Functionally Integrated Supporting Organizations

1 Check the box next to the method that the organization used to satisfy the Integral Part Test during the year (see instructions).			
a <input type="checkbox"/> The organization satisfied the Activities Test. Complete line 2 below.			
b <input type="checkbox"/> The organization is the parent of each of its supported organizations. Complete line 3 below.			
c <input type="checkbox"/> The organization supported a governmental entity. Describe in Part VI how you supported a governmental entity (see instructions).			
2 Activities Test. Answer lines 2a and 2b below.			
a Did substantially all of the organization's activities during the tax year directly further the exempt purposes of the supported organization(s) to which the organization was responsive? If "Yes," then in Part VI identify those supported organizations and explain how these activities directly furthered their exempt purposes, how the organization was responsive to those supported organizations, and how the organization determined that these activities constituted substantially all of its activities.		Yes	No
b Did the activities described on line 2a, above, constitute activities that, but for the organization's involvement, one or more of the organization's supported organization(s) would have been engaged in? If "Yes," explain in Part VI the reasons for the organization's position that its supported organization(s) would have engaged in these activities but for the organization's involvement.			
3 Parent of Supported Organizations. Answer lines 3a and 3b below.			
a Did the organization have the power to regularly appoint or elect a majority of the officers, directors, or trustees of each of the supported organizations? If "Yes" or "No" provide details in Part VI .			
b Did the organization exercise a substantial degree of direction over the policies, programs, and activities of each of its supported organizations? If "Yes," describe in Part VI the role played by the organization in this regard.			
2a			
2b			
3a			
3b			

Part V Type III Non-Functionally Integrated 509(a)(3) Supporting Organizations

1 Check here if the organization satisfied the Integral Part Test as a qualifying trust on Nov. 20, 1970 (explain in Part VI). See instructions.
All other Type III non-functionally integrated supporting organizations must complete Sections A through E.

Section A - Adjusted Net Income		(A) Prior Year	(B) Current Year (optional)
1	Net short-term capital gain	1	
2	Recoveries of prior-year distributions	2	
3	Other gross income (see instructions)	3	
4	Add lines 1 through 3.	4	
5	Depreciation and depletion	5	
6	Portion of operating expenses paid or incurred for production or collection of gross income or for management, conservation, or maintenance of property held for production of income (see instructions)	6	
7	Other expenses (see instructions)	7	
8	Adjusted Net Income (subtract lines 5, 6, and 7 from line 4)	8	

Section B - Minimum Asset Amount		(A) Prior Year	(B) Current Year (optional)
1	Aggregate fair market value of all non-exempt-use assets (see instructions for short tax year or assets held for part of year):		
a	Average monthly value of securities	1a	
b	Average monthly cash balances	1b	
c	Fair market value of other non-exempt-use assets	1c	
d	Total (add lines 1a, 1b, and 1c)	1d	
e	Discount claimed for blockage or other factors (explain in detail in Part VI):		
2	Acquisition indebtedness applicable to non-exempt-use assets	2	
3	Subtract line 2 from line 1d.	3	
4	Cash deemed held for exempt use. Enter 0.015 of line 3 (for greater amount, see instructions).	4	
5	Net value of non-exempt-use assets (subtract line 4 from line 3)	5	
6	Multiply line 5 by 0.035.	6	
7	Recoveries of prior-year distributions	7	
8	Minimum Asset Amount (add line 7 to line 6)	8	

Section C - Distributable Amount			Current Year
1	Adjusted net income for prior year (from Section A, line 8, column A)	1	
2	Enter 0.85 of line 1.	2	
3	Minimum asset amount for prior year (from Section B, line 8, column A)	3	
4	Enter greater of line 2 or line 3.	4	
5	Income tax imposed in prior year	5	
6	Distributable Amount. Subtract line 5 from line 4, unless subject to emergency temporary reduction (see instructions).	6	
7	<input type="checkbox"/> Check here if the current year is the organization's first as a non-functionally integrated Type III supporting organization (see instructions).		

Part V Type III Non-Functionally Integrated 509(a)(3) Supporting Organizations (continued)

Section D - Distributions		Current Year
1	Amounts paid to supported organizations to accomplish exempt purposes	1
2	Amounts paid to perform activity that directly furthers exempt purposes of supported organizations, in excess of income from activity	2
3	Administrative expenses paid to accomplish exempt purposes of supported organizations	3
4	Amounts paid to acquire exempt-use assets	4
5	Qualified set-aside amounts (prior IRS approval required - provide details in Part VI)	5
6	Other distributions (describe in Part VI). See instructions.	6
7	Total annual distributions. Add lines 1 through 6.	7
8	Distributions to attentive supported organizations to which the organization is responsive (provide details in Part VI). See instructions.	8
9	Distributable amount for 2021 from Section C, line 6	9
10	Line 8 amount divided by line 9 amount	10

Section E - Distribution Allocations (see instructions)	(i) Excess Distributions	(ii) Underdistributions Pre-2021	(iii) Distributable Amount for 2021
1 Distributable amount for 2021 from Section C, line 6			
2 Underdistributions, if any, for years prior to 2021 (reasonable cause required - explain in Part VI). See instructions.			
3 Excess distributions carryover, if any, to 2021			
a From 2016			
b From 2017			
c From 2018			
d From 2019			
e From 2020			
f Total of lines 3a through 3e			
g Applied to underdistributions of prior years			
h Applied to 2021 distributable amount			
i Carryover from 2016 not applied (see instructions)			
j Remainder. Subtract lines 3g, 3h, and 3i from line 3f.			
4 Distributions for 2021 from Section D, line 7: \$			
a Applied to underdistributions of prior years			
b Applied to 2021 distributable amount			
c Remainder. Subtract lines 4a and 4b from line 4.			
5 Remaining underdistributions for years prior to 2021, if any. Subtract lines 3g and 4a from line 2. For result greater than zero, explain in Part VI. See instructions.			
6 Remaining underdistributions for 2021. Subtract lines 3h and 4b from line 1. For result greater than zero, explain in Part VI. See instructions.			
7 Excess distributions carryover to 2022. Add lines 3j and 4c.			
8 Breakdown of line 7:			
a Excess from 2017			
b Excess from 2018			
c Excess from 2019			
d Excess from 2020			
e Excess from 2021			

Part VI

Supplemental Information. Provide the explanations required by Part II, line 10; Part II, line 17a or 17b; Part III, line 12; Part IV, Section A, lines 1, 2, 3b, 3c, 4b, 4c, 5a, 6, 9a, 9b, 9c, 11a, 11b, and 11c; Part IV, Section B, lines 1 and 2; Part IV, Section C, line 1; Part IV, Section D, lines 2 and 3; Part IV, Section E, lines 1c, 2a, 2b, 3a, and 3b; Part V, line 1; Part V, Section B, line 1e; Part V, Section D, lines 5, 6, and 8; and Part V, Section E, lines 2, 5, and 6. Also complete this part for any additional information. (See instructions.)

Lined area for supplemental information with a large diagonal 'DRAFT' watermark.

Schedule B
(Form 990)

Department of the Treasury
Internal Revenue Service

Schedule of Contributors

▶ Attach to Form 990 or Form 990-PF.
▶ Go to www.irs.gov/Form990 for the latest information.

OMB No. 1545-0047

2021

Name of the organization

WESCOE FOUNDATION FOR PULMONARY FIBROSIS

Employer identification number

27-4464618

Organization type (check one):

Filers of:

Section:

Form 990 or 990-EZ

501(c)(3) (enter number) organization

4947(a)(1) nonexempt charitable trust **not** treated as a private foundation

527 political organization

Form 990-PF

501(c)(3) exempt private foundation

4947(a)(1) nonexempt charitable trust treated as a private foundation

501(c)(3) taxable private foundation

Check if your organization is covered by the **General Rule** or a **Special Rule**.

Note: Only a section 501(c)(7), (8), or (10) organization can check boxes for both the General Rule and a Special Rule. See instructions.

General Rule

For an organization filing Form 990, 990-EZ, or 990-PF that received, during the year, contributions totaling \$5,000 or more (in money or property) from any one contributor. Complete Parts I and II. See instructions for determining a contributor's total contributions.

Special Rules

For an organization described in section 501(c)(3) filing Form 990 or 990-EZ that met the 33 1/3% support test of the regulations under sections 509(a)(1) and 170(b)(1)(A)(vi), that checked Schedule A (Form 990), Part II, line 13, 16a, or 16b, and that received from any one contributor, during the year, total contributions of the greater of (1) \$5,000; or (2) 2% of the amount on (i) Form 990, Part VIII, line 1h; or (ii) Form 990-EZ, line 1. Complete Parts I and II.

For an organization described in section 501(c)(7), (8), or (10) filing Form 990 or 990-EZ that received from any one contributor, during the year, total contributions of more than \$1,000 exclusively for religious, charitable, scientific, literary, or educational purposes, or for the prevention of cruelty to children or animals. Complete Parts I (entering "N/A" in column (b) instead of the contributor name and address), II, and III.

For an organization described in section 501(c)(7), (8), or (10) filing Form 990 or 990-EZ that received from any one contributor, during the year, contributions *exclusively* for religious, charitable, etc., purposes, but no such contributions totaled more than \$1,000. If this box is checked, enter here the total contributions that were received during the year for an *exclusively* religious, charitable, etc., purpose. Don't complete any of the parts unless the **General Rule** applies to this organization because it received *nonexclusively* religious, charitable, etc., contributions totaling \$5,000 or more during the year ▶ \$ _____

Caution: An organization that isn't covered by the General Rule and/or the Special Rules doesn't file Schedule B (Form 990), but it **must** answer "No" on Part IV, line 2, of its Form 990; or check the box on line H of its Form 990-EZ or on its Form 990-PF, Part I, line 2, to certify that it doesn't meet the filing requirements of Schedule B (Form 990).

Name of organization WESCOE FOUNDATION FOR PULMONARY FIBROSIS	Employer identification number 27-4464618
---	---

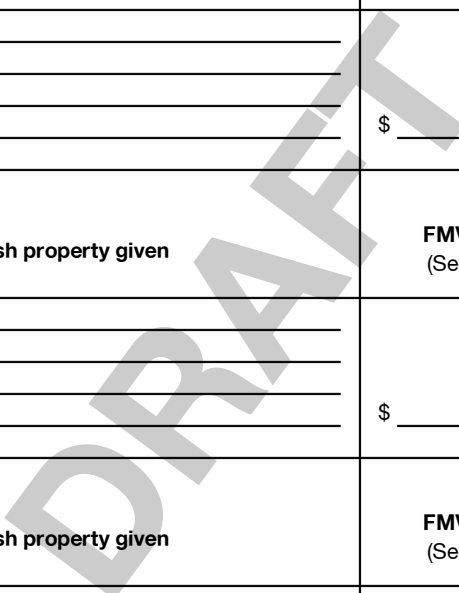
Part I Contributors (see instructions). Use duplicate copies of Part I if additional space is needed.

(a) No.	(b) Name, address, and ZIP + 4	(c) Total contributions	(d) Type of contribution
1	TEMPLE UNIVERSITY HOSPITAL P.O. BOX 46407 PHILADELPHIA, PA 19160	\$ 32,925.	Person <input checked="" type="checkbox"/> Payroll <input type="checkbox"/> Noncash <input type="checkbox"/> (Complete Part II for noncash contributions.)
2	PENNSYLVANIA DEPARTMENT OF HUMAN SERVICES P.O. BOX 2675 HARRISBURG, PA 17120	\$ 100,000.	Person <input checked="" type="checkbox"/> Payroll <input type="checkbox"/> Noncash <input type="checkbox"/> (Complete Part II for noncash contributions.)
3	U.S. SMALL BUSINESS ADMIN PAYCHECK PROTECTION PROGRAM C/O EMBASSY BANK 4148 TILGHMAN ST ALLENTOWN, PA 18104	\$ 8,106.	Person <input checked="" type="checkbox"/> Payroll <input type="checkbox"/> Noncash <input type="checkbox"/> (Complete Part II for noncash contributions.)
	_____ _____ _____	\$ _____	Person <input type="checkbox"/> Payroll <input type="checkbox"/> Noncash <input type="checkbox"/> (Complete Part II for noncash contributions.)
	_____ _____ _____	\$ _____	Person <input type="checkbox"/> Payroll <input type="checkbox"/> Noncash <input type="checkbox"/> (Complete Part II for noncash contributions.)
	_____ _____ _____	\$ _____	Person <input type="checkbox"/> Payroll <input type="checkbox"/> Noncash <input type="checkbox"/> (Complete Part II for noncash contributions.)

Name of organization WESCOE FOUNDATION FOR PULMONARY FIBROSIS	Employer identification number 27-4464618
---	---

Part II Noncash Property (see instructions). Use duplicate copies of Part II if additional space is needed.

(a) No. from Part I	(b) Description of noncash property given	(c) FMV (or estimate) (See instructions.)	(d) Date received
		\$ _____	_____
		\$ _____	_____
		\$ _____	_____
		\$ _____	_____
		\$ _____	_____
		\$ _____	_____
		\$ _____	_____



Name of organization WESCOE FOUNDATION FOR PULMONARY FIBROSIS	Employer identification number 27-4464618
---	---

Part III Exclusively religious, charitable, etc., contributions to organizations described in section 501(c)(7), (8), or (10) that total more than \$1,000 for the year from any one contributor. Complete columns (a) through (e) and the following line entry. For organizations completing Part III, enter the total of exclusively religious, charitable, etc., contributions of \$1,000 or less for the year. (Enter this info. once.) ▶ \$ _____
Use duplicate copies of Part III if additional space is needed.

(a) No. from Part I	(b) Purpose of gift	(c) Use of gift	(d) Description of how gift is held
(e) Transfer of gift			
Transferee's name, address, and ZIP + 4		Relationship of transferor to transferee	
(a) No. from Part I	(b) Purpose of gift	(c) Use of gift	(d) Description of how gift is held
(e) Transfer of gift			
Transferee's name, address, and ZIP + 4		Relationship of transferor to transferee	
(a) No. from Part I	(b) Purpose of gift	(c) Use of gift	(d) Description of how gift is held
(e) Transfer of gift			
Transferee's name, address, and ZIP + 4		Relationship of transferor to transferee	
(a) No. from Part I	(b) Purpose of gift	(c) Use of gift	(d) Description of how gift is held
(e) Transfer of gift			
Transferee's name, address, and ZIP + 4		Relationship of transferor to transferee	

SCHEDULE D (Form 990)

Department of the Treasury Internal Revenue Service

Supplemental Financial Statements

Complete if the organization answered "Yes" on Form 990, Part IV, line 6, 7, 8, 9, 10, 11a, 11b, 11c, 11d, 11e, 11f, 12a, or 12b.

Attach to Form 990.

Go to www.irs.gov/Form990 for instructions and the latest information.

OMB No. 1545-0047

2021

Open to Public Inspection

Name of the organization WESCOE FOUNDATION FOR PULMONARY FIBROSIS Employer identification number 27-4464618

Part I Organizations Maintaining Donor Advised Funds or Other Similar Funds or Accounts. Complete if the organization answered "Yes" on Form 990, Part IV, line 6.

Table with 3 columns: Question, (a) Donor advised funds, (b) Funds and other accounts. Rows include total number at end of year, aggregate value of contributions, grants, and end of year, and two yes/no questions about donor property and grant fund usage.

Part II Conservation Easements. Complete if the organization answered "Yes" on Form 990, Part IV, line 7.

Table with 3 columns: Question, (a) Donor advised funds, (b) Funds and other accounts. Rows include purpose of easements, number of easements, acreage, and expenses, and two yes/no questions about monitoring and reporting.

Part III Organizations Maintaining Collections of Art, Historical Treasures, or Other Similar Assets. Complete if the organization answered "Yes" on Form 990, Part IV, line 8.

Table with 3 columns: Question, (a) Donor advised funds, (b) Funds and other accounts. Rows include reporting requirements for art and historical treasures, and amounts required to be reported.

Part III Organizations Maintaining Collections of Art, Historical Treasures, or Other Similar Assets (continued)

- 3 Using the organization's acquisition, accession, and other records, check any of the following that make significant use of its collection items (check all that apply):
- a Public exhibition
 - b Scholarly research
 - c Preservation for future generations
 - d Loan or exchange program
 - e Other _____
- 4 Provide a description of the organization's collections and explain how they further the organization's exempt purpose in Part XIII.
- 5 During the year, did the organization solicit or receive donations of art, historical treasures, or other similar assets to be sold to raise funds rather than to be maintained as part of the organization's collection? Yes No

Part IV Escrow and Custodial Arrangements. Complete if the organization answered "Yes" on Form 990, Part IV, line 9, or reported an amount on Form 990, Part X, line 21.

- 1a Is the organization an agent, trustee, custodian or other intermediary for contributions or other assets not included on Form 990, Part X? Yes No
- b If "Yes," explain the arrangement in Part XIII and complete the following table:
- | | Amount |
|---------------------------------|--------|
| c Beginning balance | 1c |
| d Additions during the year | 1d |
| e Distributions during the year | 1e |
| f Ending balance | 1f |
- 2a Did the organization include an amount on Form 990, Part X, line 21, for escrow or custodial account liability? Yes No
- b If "Yes," explain the arrangement in Part XIII. Check here if the explanation has been provided on Part XIII

Part V Endowment Funds. Complete if the organization answered "Yes" on Form 990, Part IV, line 10.

	(a) Current year	(b) Prior year	(c) Two years back	(d) Three years back	(e) Four years back
1a Beginning of year balance					
b Contributions					
c Net investment earnings, gains, and losses					
d Grants or scholarships					
e Other expenditures for facilities and programs					
f Administrative expenses					
g End of year balance					

- 2 Provide the estimated percentage of the current year end balance (line 1g, column (a)) held as:
- a Board designated or quasi-endowment _____ %
 - b Permanent endowment _____ %
 - c Term endowment _____ %
- The percentages on lines 2a, 2b, and 2c should equal 100%.
- 3a Are there endowment funds not in the possession of the organization that are held and administered for the organization by:
- | | Yes | No |
|--|--------|----|
| (i) Unrelated organizations | 3a(i) | |
| (ii) Related organizations | 3a(ii) | |
| b If "Yes" on line 3a(ii), are the related organizations listed as required on Schedule R? | 3b | |
- 4 Describe in Part XIII the intended uses of the organization's endowment funds.

Part VI Land, Buildings, and Equipment.

Complete if the organization answered "Yes" on Form 990, Part IV, line 11a. See Form 990, Part X, line 10.

Description of property	(a) Cost or other basis (investment)	(b) Cost or other basis (other)	(c) Accumulated depreciation	(d) Book value
1a Land				
b Buildings				
c Leasehold improvements				
d Equipment	6,528.		1,816.	4,712.
e Other				

Total. Add lines 1a through 1e. (Column (d) must equal Form 990, Part X, column (B), line 10c.) 4,712.

Part VII Investments - Other Securities.

Complete if the organization answered "Yes" on Form 990, Part IV, line 11b. See Form 990, Part X, line 12.

(a) Description of security or category (including name of security)	(b) Book value	(c) Method of valuation: Cost or end-of-year market value
(1) Financial derivatives		
(2) Closely held equity interests		
(3) Other		
(A)		
(B)		
(C)		
(D)		
(E)		
(F)		
(G)		
(H)		
Total. (Col. (b) must equal Form 990, Part X, col. (B) line 12.) ▶		

Part VIII Investments - Program Related.

Complete if the organization answered "Yes" on Form 990, Part IV, line 11c. See Form 990, Part X, line 13.

(a) Description of investment	(b) Book value	(c) Method of valuation: Cost or end-of-year market value
(1)		
(2)		
(3)		
(4)		
(5)		
(6)		
(7)		
(8)		
(9)		
Total. (Col. (b) must equal Form 990, Part X, col. (B) line 13.) ▶		

Part IX Other Assets.

Complete if the organization answered "Yes" on Form 990, Part IV, line 11d. See Form 990, Part X, line 15.

(a) Description	(b) Book value
(1)	
(2)	
(3)	
(4)	
(5)	
(6)	
(7)	
(8)	
(9)	
Total. (Column (b) must equal Form 990, Part X, col. (B) line 15.) ▶	

Part X Other Liabilities.

Complete if the organization answered "Yes" on Form 990, Part IV, line 11e or 11f. See Form 990, Part X, line 25.

1. (a) Description of liability	(b) Book value
(1) Federal income taxes	
(2)	
(3)	
(4)	
(5)	
(6)	
(7)	
(8)	
(9)	
Total. (Column (b) must equal Form 990, Part X, col. (B) line 25.) ▶	

2. Liability for uncertain tax positions. In Part XIII, provide the text of the footnote to the organization's financial statements that reports the organization's liability for uncertain tax positions under FASB ASC 740. Check here if the text of the footnote has been provided in Part XIII...

Part II Fundraising Events. Complete if the organization answered "Yes" on Form 990, Part IV, line 18, or reported more than \$15,000 of fundraising event contributions and gross income on Form 990-EZ, lines 1 and 6b. List events with gross receipts greater than \$5,000.

		(a) Event #1	(b) Event #2	(c) Other events	(d) Total events	
		COOPERSBURG 5K (event type)	GOLF EVENT (event type)	1 (total number)	(add col. (a) through col. (c))	
Revenue	1	Gross receipts	8,790.	11,172.	5,275.	25,237.
	2	Less: Contributions	6,750.	4,712.	5,275.	16,737.
	3	Gross income (line 1 minus line 2)	2,040.	6,460.		8,500.
Direct Expenses	4	Cash prizes				
	5	Noncash prizes				
	6	Rent/facility costs				
	7	Food and beverages		1,760.		1,760.
	8	Entertainment				
	9	Other direct expenses	6,213.	7,491.	2,138.	15,842.
	10	Direct expense summary. Add lines 4 through 9 in column (d)				17,602.
11	Net income summary. Subtract line 10 from line 3, column (d)				-9,102.	

Part III Gaming. Complete if the organization answered "Yes" on Form 990, Part IV, line 19, or reported more than \$15,000 on Form 990-EZ, line 6a.

		(a) Bingo	(b) Pull tabs/instant bingo/progressive bingo	(c) Other gaming	(d) Total gaming (add col. (a) through col. (c))
Revenue	1	Gross revenue			
Direct Expenses	2	Cash prizes			
	3	Noncash prizes			
	4	Rent/facility costs			
	5	Other direct expenses			
	6	Volunteer labor	<input type="checkbox"/> Yes _____ % <input type="checkbox"/> No	<input type="checkbox"/> Yes _____ % <input type="checkbox"/> No	<input type="checkbox"/> Yes _____ % <input type="checkbox"/> No
	7	Direct expense summary. Add lines 2 through 5 in column (d)			
	8	Net gaming income summary. Subtract line 7 from line 1, column (d)			

9 Enter the state(s) in which the organization conducts gaming activities: _____
 a Is the organization licensed to conduct gaming activities in each of these states? Yes No
 b If "No," explain: _____

10a Were any of the organization's gaming licenses revoked, suspended, or terminated during the tax year? Yes No
 b If "Yes," explain: _____

Part IV Supplemental Information *(continued)*

DRAFT

**SCHEDULE O
(Form 990)**

Department of the Treasury
Internal Revenue Service

Supplemental Information to Form 990 or 990-EZ

Complete to provide information for responses to specific questions on
Form 990 or 990-EZ or to provide any additional information.

▶ Attach to Form 990 or Form 990-EZ.

▶ Go to www.irs.gov/Form990 for the latest information.

OMB No. 1545-0047

2021

Open to Public
Inspection

Name of the organization

WESCOE FOUNDATION FOR PULMONARY FIBROSIS

Employer identification number

27-4464618

FORM 990, PART I, LINE 1, DESCRIPTION OF ORGANIZATION MISSION:

RESOURCES FOR PATIENTS LIVING WITH IDIOPATHIC PULMONARY FIBROSIS (IPF),
THEIR FAMILIES AND CARE PARTNERS IN ORDER TO SUSTAIN THE HIGHEST
POSSIBLE QUALITY OF LIFE.

FORM 990, PART III, LINE 4C, PROGRAM SERVICE ACCOMPLISHMENTS:

LANDMARKS AND 22 PULMONARY REHABILITATION CENTERS BLUE.

FORM 990, PART VI, SECTION B, LINE 11B:

THE BOARD TREASURER AND EXECUTIVE DIRECTOR REVIEW THE 990 AND DISSEMINATE
IT TO THE ENTIRE BOARD OF DIRECTORS FOR DISCUSSION AND APPROVAL BEFORE
SUBMITTING IT TO THE IRS.

FORM 990, PART VI, SECTION B, LINE 12C:

ALL DIRECTORS REVIEW/SIGN CONFLICT OF INTEREST POLICY AT ANNUAL MEETING.

FORM 990, PART VI, SECTION B, LINE 15:

THE PROCESS FOR DETERMINING COMPENSATION INCLUDES A REVIEW AND APPROVAL BY
THE BOARD OF DIRECTORS.

FORM 990, PART VI, SECTION C, LINE 18:

FORM 1023 AND FORM 990 ARE MADE AVAILABLE UPON REQUEST. FORM 990 IS ALSO
AVAILABLE ON GUIDESTAR.

FORM 990, PART VI, SECTION C, LINE 19:

DOCUMENTS ARE AVAILABLE UPON REQUEST,

LHA For Paperwork Reduction Act Notice, see the Instructions for Form 990 or 990-EZ.

Schedule O (Form 990) 2021

132211 11-11-21

Mail to:

Pennsylvania Department of State
Bureau of Corporations and Charitable Organizations
207 North Office Building
Harrisburg, PA 17120

See www.dos.pa.gov/charities for more information

Charitable Organization Registration Statement

BCO-10 (rev. 2/2022)

Fee: See instructions

Certificate number: 111697
(N/A if initial registration)

Fiscal year ended: 12/31/2021
MM DD YYYY

FEIN: 27-4464618

If this is a voluntary registration, check and complete the applicable box(es). For a registration to be voluntary, at least one of the following must apply:

Organization is exempt from registration because

Organization does not solicit contributions in Pennsylvania

1. Legal name of organization: WESCOE FOUNDATION FOR PULMONARY FIBROSIS

Check if name change and give previous name _____

2. All other names used to solicit contributions: _____

NONE

3. Contact person: JENNIFER WESCOE SINGLEY Contact's E-mail: JENNIFER_WESCOE@WESCOEFOUNDA

4. Principal address of organization: _____ Mailing address: (if different than principal address): _____

229 N. MAIN STREET

COOPERSBURG

PA 18036

County: LEHIGH

Phone number: 484-553-6340

800 number: _____

Fax number: _____

Email (if different than Contact's email): _____

Website: WWW.WESCOE.ORG

5. Type of organization (e.g. non-profit corporation, unincorporated association, etc.):
501(C)(3) TAX EXEMPT ORG.

Where established: PENNSYLVANIA

Date established*: 05/04/2009

*Initial registrants must submit copies of organizational documents such as charter, articles of incorporation, constitution or other organizational instrument and by-laws.

WESCOE FOUNDATION FOR PULMONARY FIBROSIS

- 6. Name and addresses of all offices, chapters, branches, auxiliaries, affiliates or other subordinate units located in Pennsylvania, which share in the contributions or other revenue raised in the Commonwealth: (Attach a separate sheet if necessary)

229 N. MAIN ST, COOPERSBURG, PA 18036

484-553-6340

- 7. Short form registration applicability - Specified types of charitable organizations described in §162.7(a) of the Act may file a short form registration, which permits the organization to register without filing a financial report. Check the section that describes the organization. If the organization does not meet any of the criteria below for short form registration, check "Not Applicable":

§162.7(a)(1) - Persons or organizations which solicit contributions for the relief of a specific individual, when all of the contributions collected are turned over to the named beneficiary for his/her use without any deductions and provided that all contributions collected shall be held in trust

§162.7(a)(2) - Organizations which only solicit within the membership of the organization by other members of the organization. The term "membership" shall not include those persons who are granted a membership solely upon making a contribution as the result of solicitation. "Member" means a person having membership in a nonprofit corporation, or other organization, in accordance with the provisions of its articles of incorporation, bylaws or other instruments creating its form and organization and having bona fide rights and privileges in the organization such as the right to vote, to elect officers and directors, to hold office or position as ordinarily conferred on members of such organizations.

§162.7(a)(3) - Organizations which receive gross contributions of no more than \$25,000 per fiscal year whose fundraising activities are carried on only by volunteers, members, officers or permanent employees and only permanent employees are compensated for those fundraising activities

§162.7(a)(4) - Veterans organizations chartered under Federal law, organizations of volunteer firemen, ambulance associations, rescue squad associations and their auxiliaries or affiliates, which are not exempt from registration, did not receive gross contributions in excess of \$100,000 and did not use a professional solicitor.

Not Applicable

Charitable organizations which check boxes §162.7(a)(1) - §162.7(a)(4) are not required to file a financial report with this registration. If "Not Applicable" is checked, the charitable organization must submit financial reports which are audited, reviewed, compiled or internally prepared. See Instructions.

Items 8 and 9 are required to be completed by initial registrants only

8. Date organization first solicited contributions from Pennsylvania residents: _____
MM DD YYYY
Other _____

9. If organization solicited Pennsylvania residents and received gross* contributions totaling more than \$25,000 in any given fiscal year, provide the date the organization first received contributions totaling more than \$25,000.

MM DD YYYY
Other _____

*Includes contributions received both within and outside Pennsylvania before any deductions or expenses.

WESCOE FOUNDATION FOR PULMONARY FIBROSIS

10. Has the organization been granted IRS tax-exempt status? Yes No

A. If "Yes," under which IRS code section: 501(C)(3) and attach a copy of the IRS exemption letter if not previously submitted.

B. Has the organization's tax-exempt status ever been denied, revoked or modified? Yes No (If "Yes," attach a copy of the denial, revocation or modification and subsequent reinstatement, if any, and if not previously submitted.)

11. Was the organization required to file any type of IRS 990 return, including 990, 990EZ, 990PF or 990N and applicable schedules, for its most recently completed fiscal year? Yes No (If "Yes," attach a copy of the most recently filed 990, 990EZ, 990PF or 990N and include all schedules. DO NOT INCLUDE SCHEDULE B UNLESS YOU FILE 990 PF.

If "No," attach an explanation of why the organization is exempt from filing an IRS 990 return. An organization that is not required to file an IRS 990 return or an organization that files a 990N, 990EZ or 990PF, must file a Pennsylvania public disclosure form (BCO-23.)

12. Manner in which contributions are solicited (e.g. direct mail, telephone, internet, etc.):

MAIL, EMAIL, PRINT MEDIA AND IN-PERSON

13. A clear description of the specific programs for which contributions are used or will be used, and a statement describing whether such programs are planned or in existence.

TO PROVIDES SUPPORT, ADVOCACY, AND RESOURCES FOR PATIENTS AND THEIR FAMILIES COPING WITH IDIOPATHIC PULMONARY FIBROSIS IN ORDER TO SUSTAIN THE HIGHEST POSSIBLE QUALITY OF LIFE VIA SUPPORT GROUPS AND COMMUNITY EVENTS.

14. Is the organization registered to solicit contributions in any other state or municipality?

Yes No (If "Yes," list all states and municipalities. Attach a separate sheet if necessary.)

15. Is any person compensated, or does the organization intend to compensate any person, who solicits contributions in Pennsylvania, including, but not limited to, employees of the organization and professional solicitors? (Do not check "Yes" if the organizations only uses or intend to only use a professional fundraising counsel.) Yes No

If "Yes," give the date the person or entity started or will start soliciting contributions from Pennsylvania residents: _____
Month Day Year

16. Names, addresses, and telephone numbers of all professional solicitors the organization uses or intends to use to solicit contributions from Pennsylvania residents. For each entry, include the beginning and ending dates of all contracts and dates Pennsylvania residents were first solicited, or will be solicited: (Attach a separate sheet if necessary)

SEE STATEMENT 1

WESCOE FOUNDATION FOR PULMONARY FIBROSIS

- 17. Names, addresses, and telephone numbers of all professional fundraising counsel the organization uses or intends to use to provide services with respect to the solicitation of contributions from Pennsylvania residents. For each entry, include the beginning and ending dates of all contracts and dates services began, or will begin, with respect to soliciting contributions from Pennsylvania residents: (Attach a separate sheet if necessary)

SEE STATEMENT 2

- 18. Names, addresses, and telephone numbers of any commercial coventurers under contract with the organization: (Attach a separate sheet if necessary)

NONE

- 19. If the registering charity is a parent organization located in Pennsylvania, does the organization elect to file a combined registration covering all of its Pennsylvania affiliates?

(See note "Affiliate and Parent Organization") Yes No Not Applicable

If "Yes," give all names and certificate numbers of the affiliate organizations:
 (Each affiliate whose parent organization files an IRS 990 group return must submit a copy of the parent organization's 990 group return and file a public disclosure form (BCO-23) for each affiliate.)

- 20. Is the registering charity a Pennsylvania affiliate of a parent organization, which elected to file a combined registration on the registering charity's behalf? (See note "Affiliate and Parent Organization")

Yes No Not Applicable

If "Yes," provide the name and, if available, certificate number of the parent organization.
 (Each affiliate whose parent organization files an IRS 990 group return must submit a copy of the parent organization's 990 group return and file a public disclosure form (BCO-23) for each affiliate.)

Legal name of parent organization

Pennsylvania certificate number

- 21. Provide the names and addresses of all officers, directors, trustees and principal salaried executive staff officers. (Attach separate sheet if necessary. A reference to the 990 or the BCO-23 is not sufficient.)

SEE STATEMENT 3

WESCOE FOUNDATION FOR PULMONARY FIBROSIS

22. Names of the individuals or officers of the organization who: (Attach a separate sheet if necessary)

A. Are in charge of solicitation activities:

JENNIFER WESCOE SINGLEY

229 N MAIN ST COOPERSBURG, PA 18036

B. Have final responsibility for the custody of contributions:

JENNIFER WESCOE SINGLEY

229 N MAIN ST COOPERSBURG, PA 18036

C. Have final responsibility for final distribution of contributions:

JENNIFER WESCOE SINGLEY

229 N MAIN ST COOPERSBURG, PA 18036

D. Are responsible for custody of financial records:

KYLE ELSENBAUMER

1033 S CEDAR CREST BLVD ALLENTOWN, PA 18103

23. Are any officers, directors, trustees, or employees related by blood, marriage, or adoption to:

A. Any other officer, director, trustee, or employee? Yes No

B. Any officer, agent, or employee of any professional fundraising counsel or solicitor under contract with organization? ** Yes No

C. Any officers, agents or employees of any supplier or vendor providing goods or services? ** Yes No

** (this includes any officer, director, trustee, or employee of the charitable organization who is also an officer, director, trustee, employee or owner of a professional fundraising counsel, professional solicitor, supplier or vendor)

If "Yes" is checked to any of the above, attach a list of related individuals including names, business, and residence addresses of related parties.

24. Has the organization or any of its present officers, directors, executive personnel or trustees ever:

A. Been found to have engaged in unlawful practices in the solicitation of contributions or administration of charitable assets or been enjoined from soliciting contributions or currently has such proceedings pending in this or any other jurisdiction? Yes No

B. Had its registration or license to solicit contributions denied, suspended, or revoked by any governmental agency? Yes No

C. Entered into any legally enforceable agreement (such as a consent agreement, an assurance of voluntary compliance or discontinuance or any similar agreement) with any district attorney, Office of Attorney General, or other local or state governmental agency? Yes No

(If "Yes" is checked in response to any of the above, attach a written explanation, including the reasons for actions, and copies of all relevant documents.)

WESCOE FOUNDATION FOR PULMONARY FIBROSIS

Certification - This registration statement must be signed by two different officers of the organization, one of whom shall be the chief fiscal officer or the equivalent.

I certify that the information provided in this registration, including all statements and attached documentation, is true and correct to the best of my knowledge, information and belief. I understand that the falsification of any statement or documentation made is subject to the penalties of 18 Pa.C.S. §4904 (relating to unsworn falsification to authorities) and 10 P.S. §162.17 (relating to administrative enforcement and penalties).

Signature of Chief Fiscal Officer

Date

KYLE ELSENBAUMER, TREASURER

Type or print name and title of Chief Fiscal Officer

Signature of Other Authorized Officer

Date

JENNIFER WESCOE SINGLEY, EXECUTIVE DIRECTOR

Type or print name and title of Other Authorized Officer

Checklist for registration:

- Completed registration statement properly signed and dated.
- A copy of the IRS 990/990EZ/990PF/990N Return and required schedules, signed and dated by an authorized officer
- Public Disclosure Form BCO-23 (if required)
- Applicable Financial Statements (audited, reviewed, compiled or internally prepared)
- Registration fee and any late filing fees
- Initial Registrants Only: IRS determination letter, articles of incorporation or charter and by-laws.

See Instructions for more information on completing this form and attachments.

FORM BCO-10

ALL PROFESSIONAL SOLICITORS

STATEMENT 1

NAME AND ADDRESS

PHONE NUMBER

NONE

CONTRACT BEGIN DATE

CONTRACT END DATE

SOLICIT DATE

DRAFT

FORM BCO-10 PROFESSIONAL FUNDRAISING COUNSELS STATEMENT 2

NAME AND ADDRESS PHONE NUMBER

NONE

CONTRACT BEGIN DATE CONTRACT END DATE SERVICE DATE

FORM BCO-10 OFFICERS, DIRECTORS, TRUSTEES AND EXECUTIVES STATEMENT 3

NAME AND ADDRESS TITLE
JENNIFER WESCOE SINGLEY EXECUTIVE DIRECTOR
229 N. MAIN STREET
COOPERSBURG, PA 18036

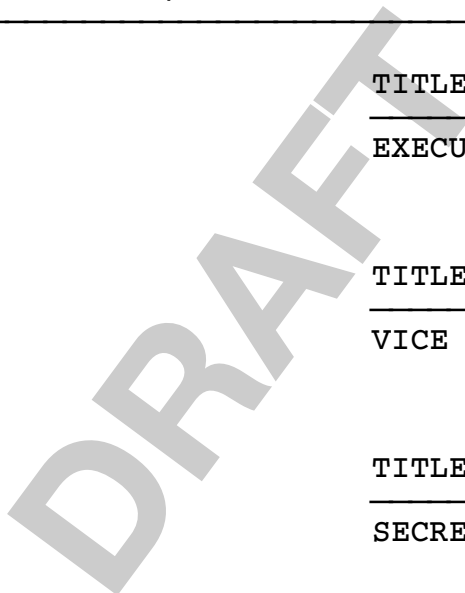
NAME AND ADDRESS TITLE
TRISHA COLASURDO VICE PRESIDENT
229 N. MAIN STREET
COOPERSBURG, PA 18036

NAME AND ADDRESS TITLE
JENNIFER FERNANDES SECRETARY
229 N. MAIN STREET
COOPERSBURG, PA 18036

NAME AND ADDRESS TITLE
GERARD PETERSEN PRESIDENT
229 N. MAIN STREET
COOPERSBURG, PA 18036

NAME AND ADDRESS TITLE
KYLE ELSENBAUMER TREASURER
229 N. MAIN STREET
COOPERSBURG, PA 18036

NAME AND ADDRESS TITLE
MIKE PFEIFFER BOARD MEMBER
229 N. MAIN STREET
COOPERSBURG, PA 18036



NAME AND ADDRESS

TITLE

DOUGLAS CORWIN
229 N. MAIN STREET
COOPERSBURG, PA 18036

BOARD MEMBER

DRAFT

**WESCOE FOUNDATION FOR PULMONARY FIBROSIS
(A Not-for-Profit Organization)**

**Financial Statements
and Accountant's Compilation Report**

December 31, 2021 and 2020

DRAFT

DRAFT

DRAFT

WESCOE FOUNDATION FOR PULMONARY FIBROSIS
(A Not-for-Profit Organization)
TABLE OF CONTENTS

	Page(s)
Accountant's Compilation Report	1
<i><u>Financial Statements:</u></i>	
Statements of Financial Position	2
Statements of Activities	3
Statements of Cash Flows	4
Statements of Functional Expenses	5 - 6

DRAFT

ACCOUNTANT'S COMPILATION REPORT

Board of Directors
Wescoe Foundation for Pulmonary Fibrosis
Coopersburg, Pennsylvania

Management is responsible for the accompanying financial statements of Wescoe Foundation for Pulmonary Fibrosis (a nonprofit organization), which comprise the statement of financial position as of December 31, 2021 and 2020, and the related statements of activities, cash flows and functional expenses for the years then ended. We have performed a compilation engagement in accordance with Statements on Standards for Accounting and Review Services promulgated by the Accounting and Review Services Committee of the AICPA. We did not audit or review the financial statements nor were we required to perform any procedures to verify the accuracy or completeness of the information provided by management. Accordingly, we do not express an opinion, a conclusion, nor provide any form of assurance on these financial statements.

Management has elected to omit all of the disclosures required by accounting principles generally accepted in the United States of America. If the omitted disclosures were included in the financial statements, they might influence the user's conclusion about the Company's financial position, results of operations, and cash flows. Accordingly, the financial statements are not designed for those who are not informed about such matters.

I am not independent with respect to Wescoe Foundation for Pulmonary Fibrosis.

Kyle Elsenbaumer, CPA

July 26, 2022

DRAFT

WESCOE FOUNDATION FOR PULMONARY FIBROSIS
(A Not-for-Profit Organization)
STATEMENTS OF FINANCIAL POSITION

	December 31, 2021	December 31, 2020
<u>Assets</u>		
Cash and Cash Equivalents	\$ 134,404	\$ 132,406
Property and Equipment	4,712	4,467
Total Assets	\$ 139,116	\$ 136,873
<u>Liabilities and Net Assets</u>		
Liabilities		
- NONE-	-	-
Total Liabilities	\$ -	\$ -
Net Assets		
Without Donor Restriction	139,116	136,873
Total Net Assets Without Donor Restriction	139,116	136,873
Total Liabilities and Net Assets	\$ 139,116	\$ 136,873

See accountant's compilation report

WESCOE FOUNDATION FOR PULMONARY FIBROSIS
(A Not-for-Profit Organization)
STATEMENTS OF ACTIVITIES

	<u>Year Ended</u> <u>December 31, 2021</u>	<u>Year Ended</u> <u>December 31, 2020</u>
Revenues and Other Support:		
Contributions and Grants	\$ 152,613	\$ 187,822
Special Events		
Gross Special Events Revenue	25,237	13,270
Special Events Expense	<u>(17,602)</u>	<u>(6,786)</u>
Net Special Events Revenue	7,635	6,484
PPP Grant Income	8,106	5,241
Interest Income	33	22
Miscellaneous	<u>264</u>	<u>-</u>
Total Revenues and Other Support	<u>168,651</u>	<u>199,569</u>
Expenses:		
Program Expenses	101,354	53,630
Management and General	43,759	20,641
Fundraising	<u>21,295</u>	<u>12,860</u>
Total Expenses	<u>166,408</u>	<u>87,131</u>
Change in Net Assets Without Donor Restriction	<u>2,243</u>	<u>112,438</u>
Net Assets, Beginning of Year	<u>136,873</u>	<u>24,435</u>
Net Assets, End of Year	<u>\$ 139,116</u>	<u>\$ 136,873</u>

See accountant's compilation report

WESCOE FOUNDATION FOR PULMONARY FIBROSIS
(A Not-for-Profit Organization)
STATEMENTS OF CASH FLOWS

	<u>Year Ended</u> <u>December 31, 2021</u>	<u>Year Ended</u> <u>December 31, 2020</u>
Cash Flows from Operating Activities		
Change in Net Assets	\$ 2,243	\$ 112,438
Adjustments to Reconcile Change in Net Assets to:		
Net Cash Used by Operating Activities:		
Depreciation Expense	1,817	-
Increase in Prepaid Expenses	-	-
	<hr/>	<hr/>
Net Cash Provided by Operating Activities	4,060	112,438
	<hr/>	<hr/>
Cash Flows from Investing Activities		
Purchases of Equipment	(2,062)	(2,067)
	<hr/>	<hr/>
Net Cash Used by Investing Activities	(2,062)	(2,067)
	<hr/>	<hr/>
Net Increase (Decrease) in Cash and Cash Equivalents	1,998	110,371
	<hr/>	<hr/>
Cash and Cash Equivalents - Beginning of Year	132,406	22,035
	<hr/>	<hr/>
Cash and Cash Equivalents - End of Year	<u>\$ 134,404</u>	<u>\$ 132,406</u>

See accountant's compilation report

WESCOE FOUNDATION FOR PULMONARY FIBROSIS
(A Not-for-Profit Organization)
STATEMENT OF FUNCTIONAL EXPENSES

	Year Ended December 31, 2021			
	Program Services	Management and General	Fundraising	Total
Salaries and Wages	\$ 30,184	\$ 18,110	\$ 12,074	\$ 60,368
Payroll Taxes	2,176	1,306	870	4,352
	<u>32,360</u>	<u>19,416</u>	<u>12,944</u>	<u>64,720</u>
Support Groups	7,667	-	-	7,667
IPF Support Seminar	595	-	-	595
Programming	36,997	-	-	36,997
Awareness and Outreach	-	-	-	-
Advertising and Marketing	3,248	1,948	1,299	6,495
Travel	-	-	-	-
Memberships	810	486	324	1,620
Office and Technology Expense	6,271	3,762	2,508	12,541
Supplies	1,625	975	650	3,250
Printing and Postage	3,086	1,851	1,234	6,171
Rent	2,575	1,545	1,030	5,150
Professional Fees	-	11,270	-	11,270
Payroll Fees	-	546	-	546
Insurance	846	508	338	1,692
Taxes and Licenses	-	-	-	-
Board of Directors	-	-	-	-
Meals and Entertainment	24	14	10	48
Scholarships	1,000	-	-	1,000
Patient Support	1,853	-	-	1,853
Depreciation	909	545	363	1,817
Miscellaneous	1,488	893	595	2,976
	<u>\$ 101,354</u>	<u>\$ 43,759</u>	<u>\$ 21,295</u>	<u>\$ 166,408</u>

See accountant's compilation report

WESCOE FOUNDATION FOR PULMONARY FIBROSIS
(A Not-for-Profit Organization)
STATEMENT OF FUNCTIONAL EXPENSES

	Year Ended December 31, 2020			
	Program Services	Management and General	Fundraising	Total
Salaries and Wages	\$ 19,454	\$ 11,672	\$ 7,781	\$ 38,907
Payroll Taxes	1,497	898	599	2,994
	<u>20,951</u>	<u>12,570</u>	<u>8,380</u>	<u>41,901</u>
Support Groups	5,711	-	-	5,711
IPF Support Seminar	12,780	-	-	12,780
Programming	-	-	-	-
Awareness and Outreach	2,572	-	-	2,572
Advertising and Marketing	566	340	226	1,132
Travel	875	525	350	1,750
Memberships	416	250	166	832
Office and Technology Expense	5,415	3,248	2,166	10,829
Supplies	373	223	149	745
Printing and Postage	717	430	287	1,434
Rent	1,000	600	400	2,000
Professional Fees	-	800	-	800
Payroll Fees	239	143	95	477
Insurance	919	551	368	1,838
Taxes and Licenses	-	302	-	302
Board of Directors	-	250	-	250
Meals and Entertainment	55	33	22	110
Scholarships	500	300	200	1,000
Patient Support	414	-	-	414
Depreciation	-	-	-	-
Miscellaneous	127	76	51	254
	<u>\$ 53,630</u>	<u>\$ 20,641</u>	<u>\$ 12,860</u>	<u>\$ 87,131</u>

See accountant's compilation report